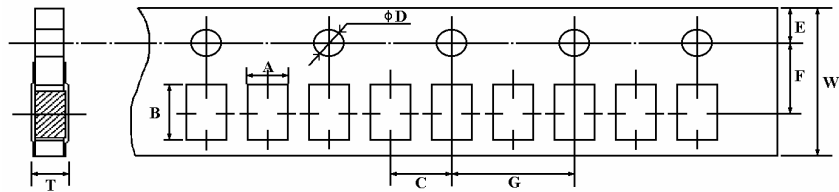


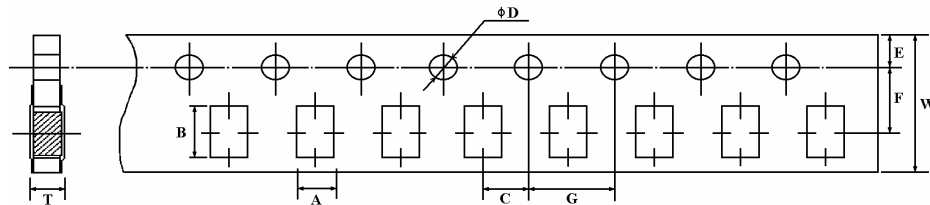
PACKING OF CHIP, CHIP ARRAY & RESISTORS NETWORK

(1) Taping Dimension (mm)

(a) Paper Taping

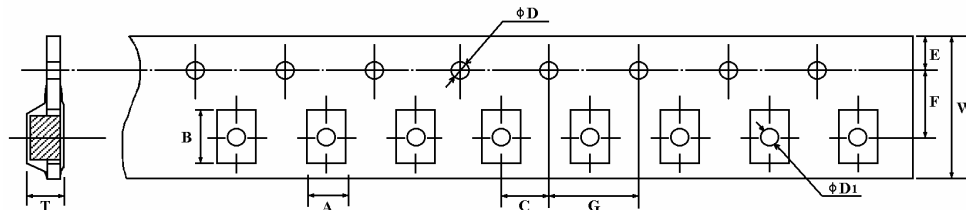


Type	A ± 0.2	B ± 0.2	C ± 0.05	$\phi D \begin{smallmatrix} +0.1 \\ -0 \end{smallmatrix}$	E ± 0.1	F ± 0.05	G ± 0.1	W ± 0.2	T ± 0.1
0402	0.65	1.15	2.0	1.5	1.75	3.5	4.0	8.0	0.45
2D02	1.20	1.20	2.0	1.5	1.75	3.5	4.0	8.0	0.45
4D02	1.20	2.20	2.0	1.5	1.75	3.5	4.0	8.0	0.70



Type	A ± 0.2	B ± 0.2	C ± 0.05	$\phi D \begin{smallmatrix} +0.1 \\ -0 \end{smallmatrix}$	E ± 0.1	F ± 0.05	G ± 0.1	W ± 0.2	T ± 0.1
0603	1.10	1.90	2.0	1.5	1.75	3.5	4.0	8.0	0.67
0805	1.65	2.40	2.0	1.5	1.75	3.5	4.0	8.0	0.81
1206	2.00	3.60	2.0	1.5	1.75	3.5	4.0	8.0	0.81
1210	2.80	3.50	2.0	1.5	1.75	3.5	4.0	8.0	0.75
4D03	2.00	3.60	2.0	1.5	1.75	3.5	4.0	8.0	0.83
10P8	2.00	3.60	2.0	1.5	1.75	3.5	4.0	8.0	0.85

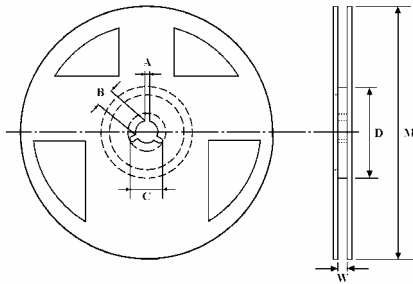
(b) Embossed Taping



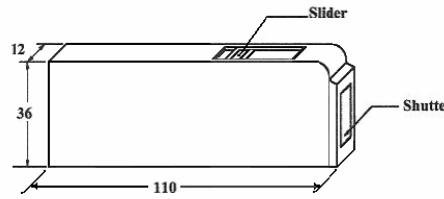
Type	A ± 0.2	B ± 0.2	C ± 0.05	$\phi D \begin{smallmatrix} +0.1 \\ -0 \end{smallmatrix}$	$\phi D_1 \begin{smallmatrix} +0.1 \\ -0 \end{smallmatrix}$	E ± 0.1	F ± 0.05	G ± 0.1	W ± 0.2	T ± 0.1
2010	2.9	5.6	2.0	1.5	1.5	1.75	5.5	4.0	12	1.0
2512	3.5	6.7	2.0	1.5	1.5	1.75	5.5	4.0	12	1.0
16P8	1.8	4.4	2.0	1.5	1.5	1.75	5.5	4.0	12	1.0

PACKING OF CHIP, CHIP ARRAY & RESISTORS NETWORK

(2) Reel Dimension (mm)



(3) Bulk Cassette Dimension (mm)



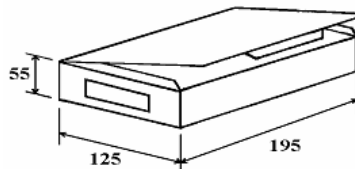
Bulk Cassette packing is available on a case-to-case basis.

Type	Packaging	Quantity / Reel	Tape Width	A ± 0.5	B ± 0.5	C ± 0.5	D ± 1	M ± 2	W ± 1
0402	Paper	10,000 pcs	8	2	13	21	60	178	10
2D02	Paper	10,000 pcs	8	2	13	21	60	178	10
4D02	Paper	10,000 pcs	8	2	13	21	60	178	10
0603	Paper	5,000 pcs	8	2	13	21	60	178	10
0805	Paper	5,000 pcs	8	2	13	21	60	178	10
1206	Paper	5,000 pcs	8	2	13	21	60	178	10
1210	Paper	5,000 pcs	8	2	13	21	60	178	10
2010	Embossed	4,000 pcs	12	2	13	21	60	178	13.8
2512	Embossed	4,000 pcs	12	2	13	21	60	178	13.8
4D03	Paper	5,000 pcs	8	2	13	21	60	178	10
16P8	Embossed	4,000 pcs	12	2	13	21	60	178	13.8
10P8	Paper	5,000 pcs	8	2	13	21	60	178	10
*ANY	Paper	1,000 pcs	8	2	13	21	52	100	10

Remark: φ M: (1) 10,000 pcs / Reel = 255 or 20,000 pcs / Reel = 330

(2) RMC 0402: 20,000 pcs / Reel = 255 or 40,000 pcs / Reel = 330 (3) * For paper taping, can pack T/R-1,000 pcs

Network Packing Specifications



Box Dimension (mm)

Bag in Box Packing (B/B)				
Pin	Quantity Per Bag (pcs)	Quantity Per Box (pcs)	Quantity Per Carton (pcs)	Gross Wt. (± 2Kgs)
4	500	5,000	100,000	24.2
5	400	4,000	80,000	26.2
6	300	3,000	60,000	22.2
7	200	2,000	40,000	18.6
8	200	2,000	40,000	20.6
9	150	1,500	30,000	17.2
10	150	1,500	30,000	19.8
11	100	1,000	20,000	15.8
12	100	1,000	20,000	16.2
13	100	1,000	20,000	16.6
14	100	1,000	20,000	17.4

SIZE OF CARTON USED : A98 – 400 x 253 x 207, A52 – 270 x 410 x 300