

GD82R Ø8mm ,T6mm With High Surge

Part Number	DC Breakdown Voltage (V)	Maximum Impulse Breakdown Voltage (V)		Maximum Impulse Discharge Current (8/20 μs) (KA)		Nom. Alternating Discharge Current (A)		Impulse Life (10/1000μs) (100A) times	DC Holdover Voltage (V)	Minimum Insulation Resistance (GΩ)	Maximum Capacitance (pf)
		100V/s	100V/μs	1000V/μs	1 time	10 times	50Hz, 1sec				
GD82R070□	70 ±20%	500	600	20	15	20	65	500	< 150ms	Note1	1MHz
GD82R090□	90 ±20%	500	600						52	10	1.5
GD82R120□	120 ±15%	500	700						52	10	1.5
GD82R130□	130 ±15%	500	700						52	10	1.5
GD82R150□	150 ±15%	500	700						52	10	1.5
GD82R180□	180 ±15%	500	700						80	10	1.5
GD82R230□	230 ±15%	500	700						80	10	1.5
GD82R250□	250 ±15%	500	700						80	10	1.5
GD82R300□	300 ±15%	700	900						150	10	1.5
GD82R350□	350 ±15%	700	900						150	10	1.5
GD82R400□	400 ±15%	800	1000						150	10	1.5
GD82R470□	470 ±15%	1000	1200						150	10	1.5

Note1 : DC Breakdown Voltage

Measuring Voltage

■ 70-90 V

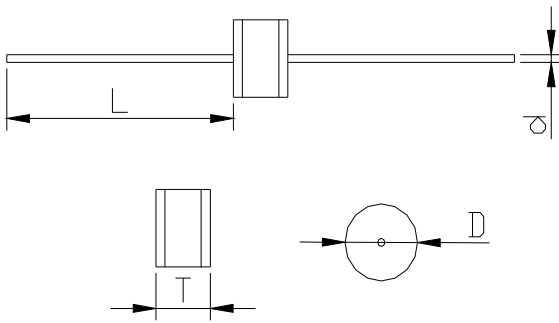
DC 50 V

■ 120-470 V

DC 100 V

Note 2: UL 497B recognized (File#E229991) for GD82R070, GD82R090, GD82R120, GD82R130, GD82R150, GD82R180, GD82R230, GD82R250, GD82R300, GD82R350, GD82R470

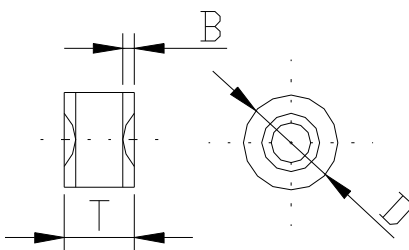
□ = A (Axial lead type)



Item	Dimensions	
	Spec.	Tolerance
D	8.0	± 0.3
L	28	Max.
T	6.0	± 0.3
d	1.0	± 0.05

Unit: mm

□ = N (No lead type)



Item	Dimensions	
	Spec.	Tolerance
D	8.0	± 0.3
T	6.0	± 0.3
B	1.1	± 0.4

Unit: mm