

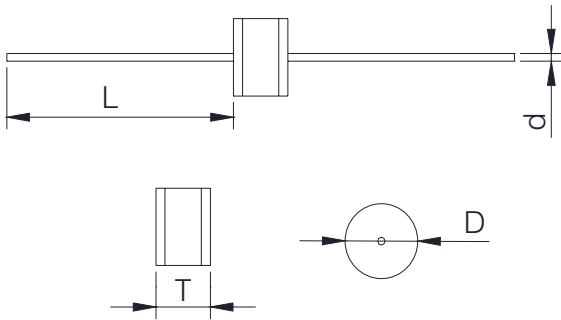
GD5 Ø5.5mm, T6mm

Part Number	DC Breakdown Voltage	Maximum Impulse Breakdown Voltage		Maximum Impulse Discharge Current (8/20 µs)		Nom. Alternating Discharge Current		Impulse Life	DC Holdover Voltage	Minimum Insulation Resistance	Maximum Capacitance
	(V)	(V)	(V)	(KA)	(KA)	(A)	(A)	(10/1000µs) (100A)	(V)	(GΩ)	(pf)
	100V/s	100V/µs	1000V/µs	1 time	10times	50Hz, 1sec	Single 9cycles	times	<150ms	Note1	1MHz
GD52R070□	70 ±20%	700	800	10	5	5	20	300	52	1	1
GD52R090□	90 ±20%	600	700						52	1	1
GD52R120□	120 ±15%	600	700						52	1	1
GD52R130□	130 ±15%	600	700						52	1	1
GD52R150□	150 ±15%	600	700						52	1	1
GD52R180□	180 ±15%	600	700						80	1	1
GD52R230□	230 ±15%	600	700						80	1	1
GD52R250□	250 ±15%	600	700						80	1	1
GD52R300□	300 ±15%	700	900						150	1	1
GD52R350□	350 ±15%	700	900						150	1	1
GD52R400□	400 ±15%	800	1000						150	1	1
GD52R470□	470 ±15%	1000	1200						150	1	1
GD52R600□	600 ±20%	1300	1500						5	2.5	2.5
GD52R800□	800 ±20%	1500	1700	150	1	1					

Note 1 : DC Breakdown Voltage      Measuring Voltage  
 ■ 70-90 V                                  DC 50 V  
 ■ 120-400 V                                DC 100 V  
 ■ 470-800 V                                DC 250 V

Note 2: UL 497B recognized (File#E229991) for GD52R070, GD52R090, GD52R120, GD52R130, GD52R150, GD52R180, GD52R230, GD52R250, GD52R300, GD52R350, GD52R470

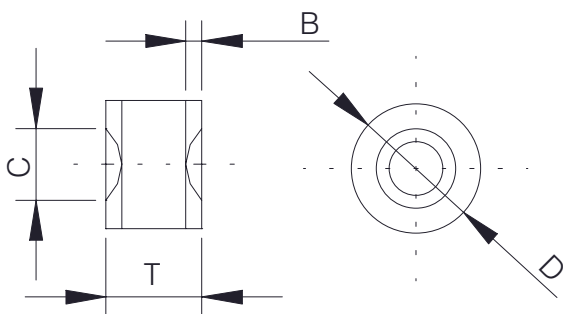
□ = A (Axial lead type)



Item	Dimensions	
	Spec.	Tolerance
D	5.5	±0.3
L	28	Max.
T	6.0	±0.3
d	0.8	±0.05

Unit: mm

□ = N (No lead type)



Item	Dimensions	
	Spec.	Tolerance
D	5.5	±0.3
T	6.0	±0.3
C	4.0	±0.5
B	1.1	±0.4

Unit: mm

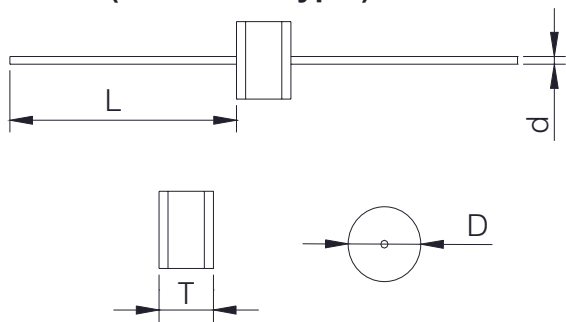
GD8 Ø8mm ,T6mm

Part Number	DC Breakdown Voltage	Maximum Impulse Breakdown Voltage		Maximum Impulse Discharge Current (8/20 μs)		Nom. Alternating Discharge Current		Impulse Life	DC Holdover Voltage	Minimum Insulation Resistance	Maximum Capacitance
	(V)	(V)	(V)	(KA)	(KA)	(A)	(A)	(10/1000μs) (100A)	(V)	(GΩ)	(pf)
	100V/s	100V/μs	1000V/μs	1 time	10 times	50Hz,1sec	Single 9cycles	times	< 150ms	Note1	1MHz
GD82R070□	70 ±20%	500	600	15	10	10	65	500	52	10	1.5
GD82R090□	90 ±20%	500	600						52	10	1.5
GD82R120□	120 ±15%	500	700						52	10	1.5
GD82R130□	130 ±15%	500	700						52	10	1.5
GD82R145□	145 ±15%	500	700						52	10	1.5
GD82R180□	180 ±15%	500	700						80	10	1.5
GD82R230□	230 ±15%	500	700						80	10	1.5
GD82R250□	250 ±15%	500	700						80	10	1.5
GD82R300□	300 ±15%	700	900						150	10	1.5
GD82R350□	350 ±15%	700	900						150	10	1.5
GD82R400□	400 ±15%	800	1000						150	10	1.5
GD82R470□	470 ±15%	1000	1200						150	10	1.5
GD82R600□	600 ±20%	1100	1400						10	5	10
GD82R800□	800 ±20%	1300	1700	150	10	1.5					

Note1 : DC Breakdown Voltage      Measuring Voltage  
 ■ 70-90 V                                  DC 50 V  
 ■ 120-400 V                                DC 100 V  
 ■ 470-800 V                                DC 250 V

Note 2: UL 497B recognized (File#E229991) for GD82R070, GD82R090, GD82R120, GD82R130, GD82R150, GD82R180, GD82R230, GD82R250, GD82R300, GD82R350, GD82R470

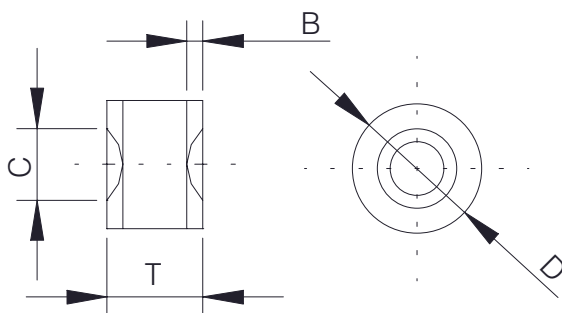
□ = A ( Axial lead type )



Item	Dimensions	
	Spec.	Tolerance
D	8.0	±0.3
L	28	Max.
T	6.0	±0.3
d	0.8	±0.05

Unit: mm

□ = N ( No lead type )



Item	Dimensions	
	Spec.	Tolerance
D	8.0	±0.3
T	6.0	±0.3
C	4.0	±0.5
B	1.1	±0.4

Unit: mm