

GC8 Ø8mm ,T8mm

Part Number	DC Breakdown Voltage	Maximum Impulse Breakdown Voltage		Maximum Impulse Discharge Current (8/20 μs)		Nom. Alternating Discharge Current		Impulse Life	Minimum Insulation Resistance	Maximum Capacitance
	(V)	(V)		(KA)		(A)		(10/1000μs)	(GΩ)	(pf)
	100V/s	100V/μs	1000V/μs	1 time	10 times	50Hz,1sec	Single 9cycles	times	Note1	1MHz
GC82R600□	600 ±15%	1000	1100	10	5	10	65	500	10	1.5
GC82R800□	800 ±15%	1100	1200					500	10	1.5
GC82R10B□	1000 ±20%	1300	1400					300	10	1.5
GC82R14B□	1400 ±20%	2100	2200	2.5	2.5	2.5	5	10	10	1.5
GC82R16B□	1600 ±20%	2300	2400					10	10	1.5
GC82R20B□	2000 ±20%	2700	2800					10	10	1.5
GC82R25B□	2500 ±20%	3500	3600					10	10	1.5
GC82R27B□	2700 ±20%	3700	3800					300*	10	1.5
GC82R30B□	3000 ±20%	4100	4200					10	10	1.5

*Measured with an 8/20μs waveform,100A

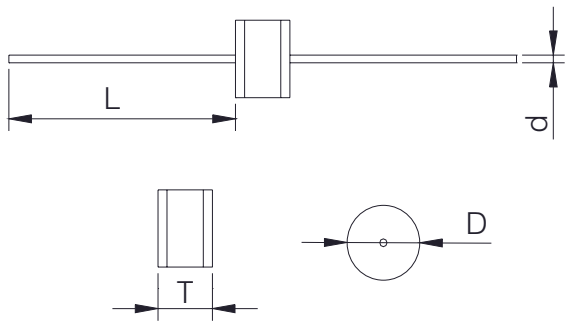
Note1 : DC Breakdown Voltage

- 600 - 1000V
- 1400 - 2500V
- 2700 - 3000V

Measuring Voltage

- DC 250V
- DC 500V
- DC 1000V

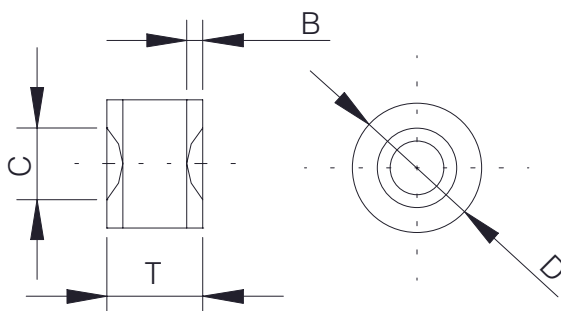
□ = A (Axial lead type)



Item	Dimensions	
	Spec.	Tolerance
D	8.0	± 0.3
L	28	Max.
T	8.0	+0.6,-0.1
d	0.8	± 0.05

Unit: mm

□ = N (No lead type)



Item	Dimensions	
	Spec.	Tolerance
D	8.0	± 0.3
T	8.0	+0.6,-0.1
C	4.0	± 0.5
B	1.1	± 0.4

Unit: mm