

GB8 Ø8mm ,T10mm

Part Number	DC Breakdown Voltage	Maximum Impulse Breakdown Voltage		Maximum Impulse Discharge Current		Nom. Alternating Discharge Current		Impulse Life	DC Holdover Voltage	Minimum Insulation Resistance	Maximum Capacitance
	(V)	(V)		(8/20 μs) (KA)		(A)		(10/1000μs) (400A)	(V)	(GΩ)	(pf)
	100V/s	100V/μs	1000V/μs	1 time	10 times	50Hz, 1sec	Single 9cycles	times	<150ms	Note1	1MHz
GB83R075□	75±20%	300	700	20	10	10	130	300	52	10	2
GB83R090□	90±20%	300	600						52	10	2
GB83R145□	145±20%	350	600						52	10	2
GB83R200□	200±20%	500	650						80	10	2
GB83R230□	230±20%	500	650						80	10	2
GB83R350□	350±20%	600	750						150	10	2
GB83R400□	400±20%	600	750						150	10	2
GB83R470□	470±20%	700	850						150	10	2
GB83R600□	600±20%	900	1100						150	10	2

Note1 : DC Breakdown Voltage

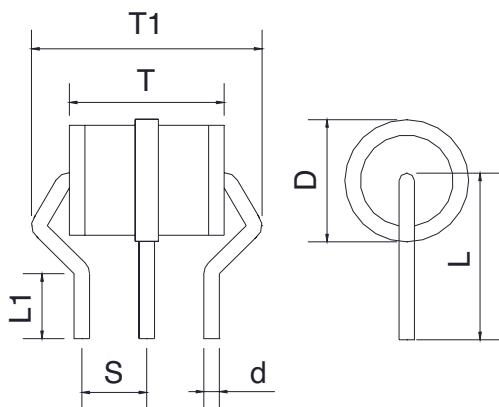
- 70-90 V
- 145-400 V
- 470-600 V

Measuring Voltage

- DC 50 V
- DC 100 V
- DC 250 V

Note 2: UL 497B recognized (File#E229991) for GB83R230, GB83R260, GB83R350, GB83R400

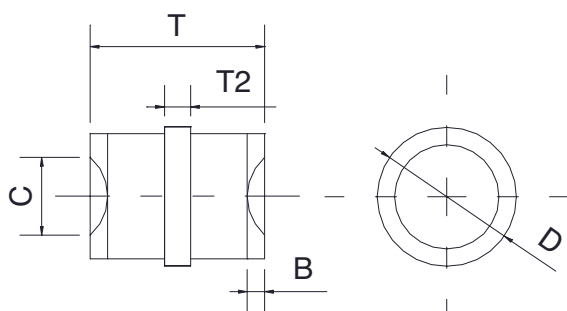
□ = R (Radial lead type)



Item	Dimensions	
	Spec.	Tolerance
D	8.0	±0.2
T	10.0	±0.3
T1	13.4	±0.4
L	11.0	±0.5
L1	4.5	±1.5
S	4.4	±0.3
d	1.0	±0.05

Unit: mm

□ = N (No lead type)



Item	Dimensions	
	Spec.	Tolerance
D	8.0	±0.2
T	10.0	±0.3
T2	1.5	±0.2
C	4.0	±0.5
B	1.4	±0.3

Unit: mm